

NEWSLETTER

**LINCOLN HOUSE, THE PADDOCKS BUSINESS CENTRE, 2ND FLOOR,
CHERRY HINTON ROAD, CAMBRIDGE, CB1 8DH**

TEL: 01223 275300

EMAIL: enquiries@coramcambridgeshireadoption.org.uk

WEBSITE: WWW.CORAMCAMBRIDGESHIREADOPTION.ORG.UK

NEWSLETTER 1

SUMMER 2015

Welcome to the first Coram Cambridgeshire Adoption newsletter. We plan to send out three newsletters a year, spring, summer and autumn, to bring you news of what is happening at Coram Cambridgeshire as well as in adoption more generally. We also hope that you will get more involved and send us your contributions; articles, poems, recipes, suggestions of places to visit with the children - whatever you would like to share. To get things started there will be a small prize for all items we publish in the next newsletter. Please email your contributions to Jane Forgacs, jane.forgacs@coramcambridgeshireadoption.org.uk or Rob Geen, rob.geen@coramcambridgeshireadoption.org.uk or by post to our address above.

SUMMER PICNIC

An opportunity to meet up with other adopters and children and to all have some fun. So bring your picnic along on to: Hinchingsbrooke Country Park, Huntingdon Saturday in August to be confirmed

We will be sending out further details but please ring Hilary Roberts on 01223 275314 if you want to know more.



ADOPTION IN THE NEWS

SHARED PARENTAL LEAVE

Working parents will soon be able to split up to 52 weeks off after adopting.

Working parents can now apply to share adoption leave under new rules aimed at offering greater flexibility in how parents care for children in their first year.

Parents will be allowed to split up to 50 weeks off work after adopting. The main carer will take the first two weeks of leave, however, it will be possible to transfer the

remaining leave to their partner or, in theory, share it.

Partners will still be entitled to two weeks leave at the start of a placement, however additional leave will now be replaced with shared parental leave.

Unless your employer offers an enhanced package, pay will be at the statutory level. This is 90% of your average weekly earnings, before tax for the first six weeks then £139.58 a week, from April 2015, or 90% of your average weekly earnings (whichever is lower) for the next 33 weeks. In total 39 of the 52 weeks will be paid.

FOR FURTHER INFORMATION:

Contact your employer's HR department who will be able to advise on both the statutory scheme and any additional schemes set up by your employer.

Adoption UK provides adoption specific advice to all those involved in adoption. Adoption UK can be contacted on 020 3597 6116.

Visit www.gov.uk/adoption-pay-leave

ADOPTION SUPPORT FUND

The new Adoption Support Fund is now available. The fund, worth £19.3 million, has been established by the Government to help adoptive families access support and settle into their new lives.

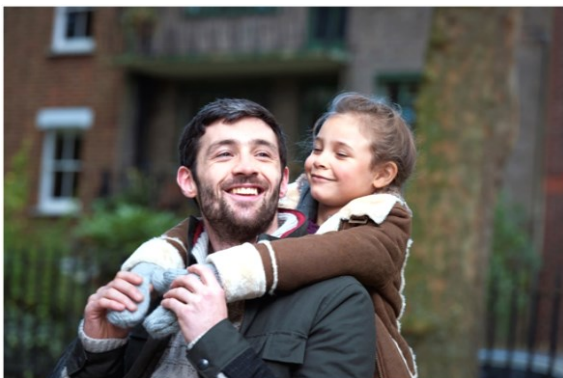
The fund will pay for therapeutic services, such as cognitive therapy, play and music therapy and intensive family support, helping children to recover from their previous experiences and bond with their new adoptive families.

The fund is available for children up to and including the age of 18 (or 25 if they have a Statement of Educational Need or an Education, Health and Care Plan) who have been adopted from Local Authority care in England or Wales (but living in England).

You will need to have an assessment of your family's adoption support needs by the Coram Cambridgeshire Adoption Support Team. Where the assessment identifies that therapeutic services would be beneficial to your family Coram Cambridgeshire Adoption will apply to the fund on your behalf and then release the funding.

For further information please contact Coram Cambridgeshire Adoption Support Team on 01223 275300.

ADOPTION PANEL



Remember adoption panel? Have you thought about participating? Coram Cambridgeshire Adoption panel are keen to have a larger representation of male panel members. If you are interested in finding out more, please contact Andy Cussell, Adoption Panel Adviser, on 01223 275342 or by emailing andy.cussell@coramcambridgeshireadoption.org.uk

NEWS FROM POST ADOPTION

ADOPTIVE PARENTS' SUPPORT GROUP

We currently run groups in March and in Cambridge, every month alternating between the daytime and the evening.

The nature of the groups varies; sometimes there will be a specific topic where we ask speakers along and other occasions where we invite you to join us for a coffee and a catch up.

CHILDREN'S GROUPS

Coram Cambridgeshire Adoption regularly runs children's groups for different age ranges. Recently we held a successful group where the children and young people enjoyed a "fun day" at Wandlebury Park; they played games, cooked their own hot dogs and took part in an orienteering challenge.



The feedback from those who had attended was very positive with new and fresh ideas for future events. Details of further groups will be available on the Coram Cambridgeshire Adoption website nearer to the date.

STAY AND PLAY

Stay and Play is a newly formed drop-in group for adopters and their children run by the Coram Cambridgeshire Adoption Support Team. This group offers a forum for new parents and their children to come and play, chat and seek informal support from other new adopters and the Adoption Support Team staff, with refreshments being provided.

Games, information, new ideas and a listening ear are provided to support new parents who are working hard to create and secure a nurturing base for their

children. Our aim is for the group to provide another avenue for support in these early formative years.



Please contact Hilary Roberts 01223 275314 or email: hilary.roberts@coramcambridgeshireadoption.org.uk

FUNDRAISING



Many congratulations to our very own Kat Heath, Adoption Social Worker, and Janine Buck, Family Finder, who both ran the London marathon in April 2015, raising funds for different charities, including Coram. Well done Kat and Janine! If you are interested in taking part in a fundraising activity on our behalf or would like to make a donation we would be delighted to hear from you. Please contact us on 01223 275300 and ask for Lorna McAtear, Business and Admin Manager.

BAAF ADOPTION ACTIVITY DAY

Are you an approved adopter or an adopter in Stage 2 approaching panel?

BAAF have an adoption activity day scheduled for the following date:

4 July 2015 in Milton Keynes

If you are interested in attending this event or would like to know more, please speak to your social worker.

FAMILY FINDING

Our Family Finding Team is doing us proud!

Adoption Link figures show that the timescale for responses to enquiries for Coram Cambridgeshire Adoption are considerably higher than all UK agencies.

adoptionlink

Home Matching Community Reports My account

Percentage of recent enquiries responded to within 7 days:



If you do not wish to receive future newsletters or would be happy to receive them electronically please let us know by contacting Clare Wade on 01223 275344 or email:

clare.wade@coramcambridgeshireadoption.org.uk

Coram Cambridgeshire Adoption is committed to finding forever families for children who need permanent, loving homes.

We are a voluntary agency created by UK children's charity Coram working jointly with Cambridgeshire County Council and with funding from the Department for Education.

We bring together the best skills and expertise from Coram and the Local Authority to help tackle adopter shortage so children in the care system do not experience drift and delay.